

# End-to-End

## The Parish Magazine of Rivenhall and Silver End



**On Christmas Eve at the St Mary's Rivenhall  
Crib Service**

**The Children once again were able to  
present the figures in the Crib**

**January**

**2023**

**50p**

## **The Following are our services For January 2023**

### **1<sup>st</sup> January**

9.30 am St Francis

11 am St Mary's

### **2<sup>nd</sup> Sunday of Christmas**

Morning Prayer

No Service

### **8<sup>th</sup> January**

9.30 am St Francis

11 am St Mary's

### **Baptism of Christ (Epiphany)**

Morning Prayer

Holy Communion

### **15<sup>th</sup> January**

9.30 am St Francis

11 am St Mary's

### **2<sup>nd</sup> Sunday of Epiphany**

Holy Communion

Matins

### **22<sup>nd</sup> January**

9.30 am St Francis

11 am St Mary's

### **3<sup>rd</sup> Sunday of Epiphany**

Morning Prayer

Holy Communion

### **29<sup>th</sup> January**

### **4<sup>th</sup> Sunday of Epiphany**

**A Joint Service to celebrate our New Team Priest**

**Please Come and Welcome the Rev. Jane Quinton**

11 am St Mary's

Holy Communion

## **Church Contacts**

All Contact should be Via the Churchwardens

Churchwarden Ann Clarke

01376 514825

Churchwarden Peter Hope

01376 502605

Email phope02@gmail.com

Rivenhall Contact Carole McCarthy

01376 512781

Silver End Contact Ruth Aitken

01376 583846

Rivenhall Website

[www.stmarysrivenhall.co.uk](http://www.stmarysrivenhall.co.uk)

St Francis Silver End Website

[www.st-francis.org.uk/](http://www.st-francis.org.uk/)

Contact the Editor 07904 235101 or phope02@gmail.com

## **January 2023 From the Editor and Church Warden Peter Hope**

Dear readers first of all a **Happy New Year** to You all from the Church Wardens of the parish of Rivenhall and Silver End. These are exciting times for us in the Parish and in the Witham Villages Team Ministry (Terling, Fairstead, Silver End, Rivenhall) of which we are a part.

Rev. Jane Quinton will be installed as Priest-in-Charge of the Villages team on the 26th January at a service to be held at 7.30 pm at All Saints church Terling (CM3 2PQ). The following Sunday (29th January) at St Mary's Church Rivenhall there will be a joint Benefice service of Holy Communion. This will be the first service led by Rev. Jane .

It is my hope that we will have a sizeable congregation to welcome Rev. Jane into our parish so please come and show your support.

You may have noted in last months magazine that Rev. Jane is a West Ham football team supporter. Well I would like to assure her and others that the many Spurs Supporters particularly at Rivenhall Church (myself among them) will be very welcoming!

I have been very pleased to note that over Christmas this year we have been able to return to our normal Christmas activities. You will find in the magazines pictures from The playing fields Santa Grotto, Carols on the Green with festive fare in the village hall afterwards. We held a well attended Carol service on the 18th December at St Mary's. The singing of Carols at the Western Arms on the 21st of December was a fun evening. We also had full churches for our Crib Services at St Francis and St Mary's on Christmas Eve . All these activities are covered in pictures through out the magazine. Oh and thank you to Father Christmas Sleigh for presenting me with a welcome gift now I'm over 70.

**Thank you to all of you for your efforts in making 2022  
a Wonderful Christmas Time**

## **Readings and Collects for January 2023**

### **1<sup>st</sup> January 2<sup>nd</sup> Sunday of Christmas**

#### **No Service**

Numbers 6:22-end

Galatians 4:4-7

Luke 2:15-21

#### **Collect**

God our Father,  
in love you sent your Son  
that the world may have life:  
lead us to seek him among the outcast  
and to find him in those in need,  
for Jesus Christ's sake.

### **8<sup>th</sup> January Sunday of Epiphany (Baptism of Christ?)**

#### **Holy Communion**

#### **Readings Epiphany**

Isaiah 60:1-6

Ephesians 3:1-12

Matthew 2:1-12

#### **Baptism of Christ**

Isaiah 42:1-9

Acts 10:34-43

Matthew 3:13-end

#### **Collect**

Heavenly Father,  
at the Jordan you revealed Jesus as your Son:  
may we recognize him as our Lord  
and know ourselves to be your beloved children;  
through Jesus Christ our Saviour.

### **15<sup>th</sup> January 2<sup>nd</sup> Sunday of Epiphany**

#### **Matins Psalm 40 Vs 1-12**

#### **Readings**

Isaiah 49:1-7

1 Corinthians 1:1-9

John 1:29-42

#### **Collect**

God the Father,  
help us to hear the call of Christ the King  
and to follow in his service,  
whose kingdom has no end;  
for he reigns with you and the Holy Spirit,  
one God, one glory.

### **22<sup>nd</sup> January 3<sup>rd</sup> Sunday of Epiphany**

#### **Holy Communion**

#### **Readings**

Isaiah 9:1-4

1 Corinthians 1:10-18

Matthew 4:12-23

### **Collect**

God of all mercy,  
your Son proclaimed good news to the poor,  
release to the captives,  
and freedom to the oppressed:  
anoint us with your Holy Spirit  
and set all your people free  
to praise you in Christ our Lord.

### **29 January 4<sup>th</sup> Sunday of Epiphany**

#### **Holy Communion**

### **Readings**

Malachi 3:1-5

Hebrews 2:14-18

Luke 2:22-40

### **Collect**

God of heaven,  
you send the gospel to the ends of the earth  
and your messengers to every nation:  
send your Holy Spirit to transform us  
by the good news of everlasting life  
in Jesus Christ our Lord.

\*\*\*\*\*

### **The 50/50 Club December 2023 winners**

1<sup>st</sup> M Galley 2<sup>nd</sup> J Ford 3<sup>rd</sup> M Noy

\*\*\*\*\*

### **NOTES OF RIVENHALL PARISH COUNCIL MEETING HELD ON 6<sup>TH</sup> DECEMBER 2022 AT HENRY DIXON HALL, RIVENHALL END.**

These notes are an abridged version of the minutes.

**Present:** Cllrs. Abbott (Chairman), Wright (Vice-Chairman),  
A'Lee, Cairns, Elliott, Prime and Turner.

**Also present:** Parish Clerk and ECC Cllr. Playle.

## **Chairman's Report**

The Planning Appeal for the proposed "Bellway Phase 4" development of up to 230 houses on land off Rectory Lane started today. The Appeal is being held in unusual circumstances. Braintree District Council refused the application in February 2022 when it did not have an up-to-date Local Plan. BDC now does have an up-to-date Local Plan (as of July 2022) and the Appeal site is not allocated in that Plan, however, BDC's Housing Land Supply has slipped from just over the required 5 years to just under. Due to the complexities involved, this means that local planning policies cannot be applied in full and in fear of losing the Appeal, BDC is not defending its refusal decision. Because of the Housing Land Supply position, the Inspector to the Appeal will be weighing up if the "harms" from the development significantly outweigh the benefits.

The parish council is being represented at the Appeal and is arguing that the harms do indeed outweigh the benefits, especially due to the loss of much of the countryside gap between Witham and Rivenhall and the impacts on the historic and much valued setting of Rectory Lane. The parish council is also setting out at the Appeal that the area has already seen a high level of development with over 600 houses built in north Witham and Rivenhall in recent years, more commercial development due along the A12, and the boundary of Witham moving into Rivenhall as a result. The Appeal decision will not be known for many weeks. There may be changes to national planning policy. The Housing Land Supply issue has been debated in Parliament. Inspectors are required to decide appeals according to the policy applying at the time, so it is not a given as to how the decision will go.

## **Public Forum**

A brief presentation was given by Andrew Lipski on the current work of Gigaclear to provide a better Broadband service within the Parish and he answered questions. A brief presentation was given by Nigel Allsopp (National Highways) re the A12 streetlights, cycleway maintenance, litter

collection and bus shelters and he answered questions.

ECC Cllr. Playle reported that ECC are now of the view that with the A12 widening Scheme, Oak Road should be a cul-de-sac with no entry from the detrunked A12. He also reported that the malfunctioning streetlights in the Parish should be repaired commencing 12<sup>th</sup> December 2022; that some potholes are to be repaired and some ECC provided trees are available for planting. Speed surveys had been undertaken along Church Road with the results being considered satisfactory.

## **Matters for Discussion**

### A12 Detrunking

A meeting between Rivenhall, Kelvedon & Witham PCs took place on 5<sup>th</sup> December. The meeting considered the ECC proposals:

- Retain one existing carriageway and “regreen” the other incorporating crushed material from the unused carriageway to include a linear walk/cycle path and parkland.
- The retained single carriageway will not necessitate a roundabout at Rivenhall End East, simply a linkage of the two existing roads from Kelvedon and Rivenhall End.
- For Oak Road, Rivenhall End to be a cul-de-sac with no entrance from the detrunked A12.
- As there appears to be no close liaison between ECC and NH regarding the detrunking of the A12, a meeting between ECC, NH, and all the local Parish Councils along the route from Marks Tey to Witham was recommended in the new year.

It was **agreed** to hold a special RPC meeting, during January, to discuss the council’s official response to the ECC proposals for detrunking the existing A12. There is a scheduled councillors meeting with ECC on 9<sup>th</sup> December.

### Rewilding and verges maintenance update

Following the meeting on 22<sup>nd</sup> November 2022, with BDC officers, the two areas for rewilding/wild flowering on the Albert

Moss Playing Field have been approved.

The proposed sites for verge rewilding/wild flowering require a licence for each site from ECC. Details have been forwarded and formal approval is still awaited. Once this has been received details will be sent to BDC.

### Planting plaques

Quotes obtained were for size 12" X 6": Brass and Acrylic. It was **agreed**, with one abstention, to purchase two acrylic plaques.

### Parishes Liaison

Both Lt. and Gt. Braxted PCs have agreed to a joint liaison with RPC as and when the need arises.

### Highway Maintenance

An estimate for the repair of the retaining wall and safety rails at the St. Mary's Road and Church Road junction was considered too high for RPC to accept at this time. The wall and steps are the responsibility of ECC Highways.

The ECC Councillor has been requested to remind ECC to undertake this repair as a matter of urgency – it was reported to ECC Highways, via their website, on 15<sup>th</sup> February 2022 and a reminder had also been sent.

The demolished 30mph countdown sign on Church Road has again been reported to ECC, as well as the damaged School sign on Church Road.

The cause for the surface water opposite Rectory Lane has been confirmed as due to a collapsed gulley and programmed for repair in due course.

Blocked drains at the Oak Road/Church Road junction are still causing the road to flood in heavy rain. This has been reported to ECC on numerous occasions, and with photos showing the extent of the flooding.

Fallen trees are blocking the footpath near Tarecroft Wood.

Smashed car parts remain near the Oak Road/Henry Dixon



Road junction, these to be reported to BDC for collection.

### **Planning Applications**

**22/02283/FUL:** Two storage/distribution units on land off Colchester Road, Rivenhall End.

Comments forwarded to BDC recommending safeguards for residents of Rivenhall End in regard to noise, lighting and the general visual amenity.

### **Planning results**

**22/02672/HH:** Single-storey rear extension, Park Gate Farm House.

### **Approved by BDC.**

**22/01541/REM:** Approval of reserved matters, land adjacent Glebe Farm, Rectory Lane.

### **Approved by BDC.**

### **Ongoing Major Planning Issues**

#### A12 to A120 widening

Provision is made under the National Highways Designated Fund for additional works to be included for the improvement, among others, of the Rivenhall End area. It was agreed that the following should be requested as additional items: replacement bus shelters, designated children's play area and maintenance of the pump in the Henry Dixon Road A12 underpass.

#### Rivenhall Airfield Waste Site

The next Liaison meeting is scheduled for 8<sup>th</sup> December.

#### Colemans Quarry

The next Liaison meeting is scheduled for 9<sup>th</sup> February 2023.

#### Local Highways Panel

The next meeting was scheduled for December 2022 (but did not take place).

## Finance

To review the Clerk's salary; the bi-annual review

It was **unanimously agreed** that Clerk's salary be raised from 1<sup>st</sup> April 2023. The Clerk has given notice that he will retire on 30<sup>th</sup> September 2023.

## Information exchange and items for the January agenda

- The existing A12 bus shelters and their future.
- The Chairman will send a 'Thank you' message with Christmas cards to the volunteer litter pickers.

## Dates of future meetings

3<sup>rd</sup> January (\*) and 7<sup>th</sup> February 2023 in Rivenhall Village Hall, both starting at 7.30pm. **(\*) Due to unforeseen circumstances, the January meeting has been moved to 17<sup>th</sup> January.**

\*\*\*\*\*

## Sky Notes January 2023

Earth is at its closest to the Sun on 4th January. Parameters of our orbit around the Sun and axial tilt vary over long time spans. The date of being closest to the Sun advances by a day every 58 years.

Mars remains prominent throughout January, in Taurus. On the evening of the 3rd, the Moon will pass about one degree (2 moon-widths) below the Red Planet. In mid-month Mars will be high in the South at around 9pm.

Full Moon is on the night of the 6th/7th, with our companion in space beaming down from its winter position, very high in the sky around midnight.

Jupiter is still prominent though best seen in the early evening in the South West. By the end of January Jupiter is getting low in the sky by about 9pm. The young Moon will be nearby on the evening of the 25th.

Venus may be seen low in the South West in evening twilight, gaining altitude by the end of the month as it heads towards a fine evening showing this coming Spring.

Comet 2022 E3 ZTF is looking promising to be at least a bright object in binoculars towards the end of January. On the 30th it will be about 10 degrees to the right of Polaris, the Pole Star and moving rapidly

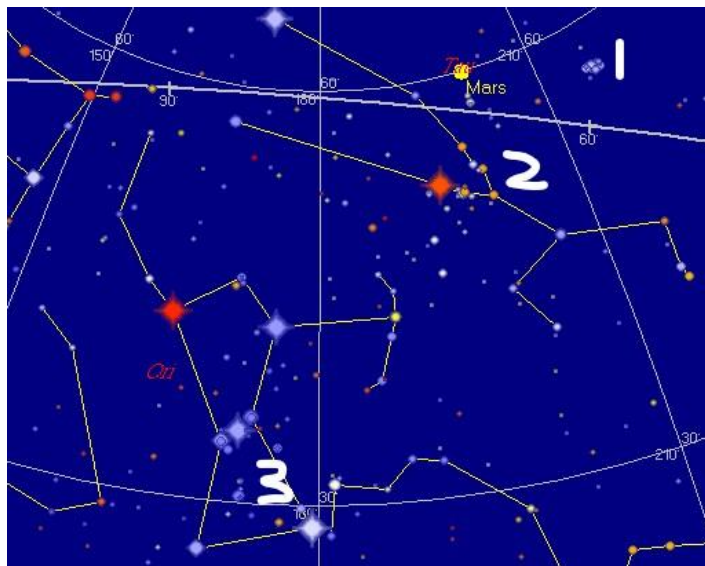
from night to night, getting progressively higher in the sky. The comet is closest to the Earth on 1st February at a distance of 26 million miles.

During the evenings of the last week of January at about 9pm is a good time to view 3 of the best "deep sky" objects with binoculars. As shown on the map, firstly starting with the Pleiades star cluster, this can be found high in the south, just to the right of Mars. The Pleiades are about 440 light years from us with some of the cluster stars being easily seen with the unaided eye – known to people thousands of years ago as the Seven Sisters and referenced in the Bible.

Secondly, below Mars is a V shaped formation of stars, another cluster, known as the Hyades. These are closer to us than the Pleiades – at about 150 light years distant - and this cluster is also older. The bright star Aldebaran forms part of the V shape, but is actually much closer to us and is not part of the cluster.

Thirdly, moving down to Orion, below the familiar 3 belt stars is the Orion Nebula. Visible as a hazy patch to the unaided eye, through binoculars or a small telescope the nebula is a superb sight – a glowing patch of gas with young stars embedded in it, which is about 1,300 light-years from us.

Sky Watcher



# ANGLIA TREE SERVICES

Specialist tree surgery

Residential & Commercial Customers

CROWN REDUCTION • FELLING • TOPPING

HEDGE TRIMMING • ALL GARDEN WORK

STUMP GRINDING

For a quick, tidy and friendly service call:

Tel: 01621 892831



7 DAYS A WEEK • EMERGENCY SERVICE AVAILABLE • FULLY INSURED



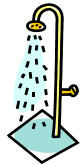
**Philip Little**

Property Maintenance Magician

Local service at local prices

Knowledgeable and friendly

**07973 129808 or 01376 515257**



Serving the Local Community for over 125 Years

# G. COLLINS & SONS

Funeral Directors Ltd



30 RAYNE ROAD, BRAINTREE, CM7 2QH

01376 342266

4 THE STREET, WHITE NOTLEY, CM8 1RH

01376 583750

[WWW.GCSFD.CO.UK](http://WWW.GCSFD.CO.UK)

## Beautiful Rooms For Rent In Witham & Braintree

We have 4 Lovely houses  
2 in Witham—2 in Braintree  
With and Without en-suites  
£90—£130 per Week

(All inclusive of Rates, Light, Heat, and with Broadband)

See our Website:- [www.jbwpartners.co.uk](http://www.jbwpartners.co.uk)

Or Call

John  
07850 161629

Mavis  
07714 579783

Michelle  
07966 323914

**HELP WITH  
FUNERAL ARRANGEMENTS  
*RICHARDS*  
FUNERAL SERVICE**



**01376 513114**

78 Newland Street, Witham, CM8 1AH

From advice on how to register a death to making all the arrangements, we're here 24 hours a day.

Members of the National Association of Funeral Directors  
A British Owned Company [www.dignityfuneral.co.uk](http://www.dignityfuneral.co.uk)

***SpeedyBroadband.co.uk***

***Sick Computers my  
Speciality***

- Home Networking Problems Sorted Out
- Computer Viruses Removed
- Operating System Upgrades
- Upgrade to Windows 10

**FOR YOUR FREE SURVEY AND  
QUOTATION CONTACT**

**Peter Hope**

**[Peter.hope@speedybroadband.co.uk](mailto:Peter.hope@speedybroadband.co.uk)**

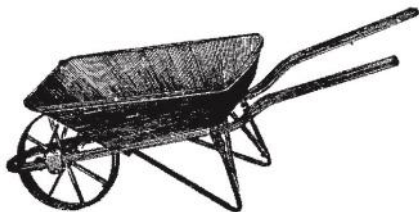
**Tel: 01376 502605**

**Mob: 07904 235101**

**Website**

**[www.speedybroadband.co.uk](http://www.speedybroadband.co.uk)**

**Ya Garden  
Cares**



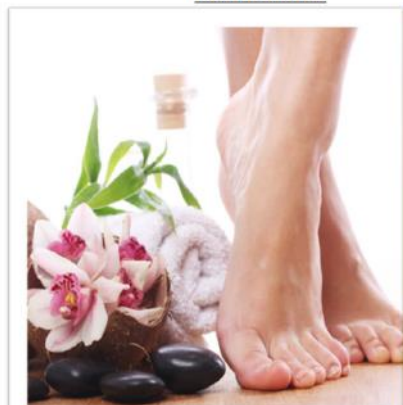
**Thorough Attention on  
Bed Maintenance,  
Mowing & Clearance**

**Telephone  
Barry: 07732337626**

## FOOT HEALTH PRACTITIONER



### HOME VISITS



NAIL  
TRIMMING  
CORNS  
CALLUS  
THICK NAILS  
HARD SKIN

COVERING:  
Chelmsford  
Witham  
Danbury  
Stock.....

**JAMES NEWMAN (MCFHP,MAFHP)**

**TELEPHONE: 01376 519036**

**MOBILE: 07793971351**



**CARING FOR THE PETS OF WITHAM AND  
THE SURROUNDING AREA FOR 25 YEARS**

**SPECIAL O.A.P. SURGERY THURSDAYS**

**CAT ONLY CLINIC WEDNESDAYS**

**Late night surgery Wednesday till 8pm**

**Surgery Opening hours  
Monday to Saturday for**

**Tel: 01376 500038**

**www.brookendvets.co.uk**



**PC Doctor**  
**Operations Limited**

**For all your computer  
requirements including:**

Virus prevention, detection & removal  
Broadband, Networking, Wireless & Firewall set up  
Email & SPAM filtering  
Hardware Repairs & Upgrades  
Software Faults & Crashes  
Backup Solutions & Data Recovery  
Software Installation & Removal  
Hardware & Software Supplied  
Website Management • Computer Training

**Health  
Checks  
£39.99**

**Office: 01621 891064 • Mobile: 07990 565336**

**Email: support@pcdocops.co.uk**

**Website: www.pcdocops.co.uk**

Monthly subscription service available to provide complete "peace of mind" and allow you to spread the cost of your IT requirements.

Please contact for further information.

## **REYNOLDS CARPENTRY SERVICES**

**For all Carpentry, Joinery  
& Cabinet Making Requirements**

**CSCS Registered**

**30 Years Experience**

**4 Years Apprenticeship**

**City & Guilds and**

**Advanced City & Guilds Qualified**

**Free estimates – No obligation**

**All building work considered**

**Can also make items to order**

**also**

**'curtain poles, tiling, flat packs,  
kitchens, doors, sheds etc, no jobs  
too small'**

**Contact**

**07889 110962**

**Answer phone at other times**

After 3 years Rivenhall Playing Fields were able to hold their Christmas Grotto in the village hall on Friday 9th December. It was a fantastic day and evening well worth all the hard work from the committee members but without the help of Frank, Clare, Jenny, Robert, Susie, Bob and Ann Wright it wouldn't have happened.

It was an absolute delight to see the faces of all the children and parents enjoying seeing Mr and Mrs Father Christmas who had a chat with all the children and passed out gifts.

We're already looking forward to next years Grotto and hopefully we'll be holding over two days.

Please also remember if you have a few hours to spare please come along to our AGM in the village hall on Tuesday 24th Jan at 7.30 as we are desperately short of committee members and would love to hear your thoughts as to how we can improve how we operate and include more events for the residents of our fantastic village





## More Santa's Grotto Pictures





Fabulous View of the Stained Glass in  
Rivenhall Church  
On Christmas Day

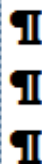


A Group of Singers at Carols on the Green



The Church on a frosty morning with the moon for company  
Thank You to Karen Dakin for this amazing shot

# Jeremy Larke Television services



Telephone: 01376 513645

Mobile: 07947 601619

Email: telerepair@aol.com

All Television Systems Catered  
for Freesat, Freeview, Sky.

- Installations & Repairs To all makes and models
- Full Plasma & LCD Fitting Service
- Wall Mount Brackets Supplied and Fitted
- Aerial & Satellite Dishes Fitted
- Freeview, Freesat & European Channels
- View and Control Your Sky in Other Rooms
- Aerial and Telephone Extension Points Installed



**Don't Delay Call Today**

## Janet C Davies

Dip. F.D. M.B.I.F.D

**BRAINTREE & KELEVEDON'S LADY FUNERAL  
DIRECTOR**

*Offering a full and Comprehensive Funeral Service*

**Telephone 01376 339300**

*For a Personal and Caring 24 hour service*

Local Chapel of Rest at Fern House 72 Coggeshall Road Braintree and  
Victoria House, Trews Gardens, Kelvedon

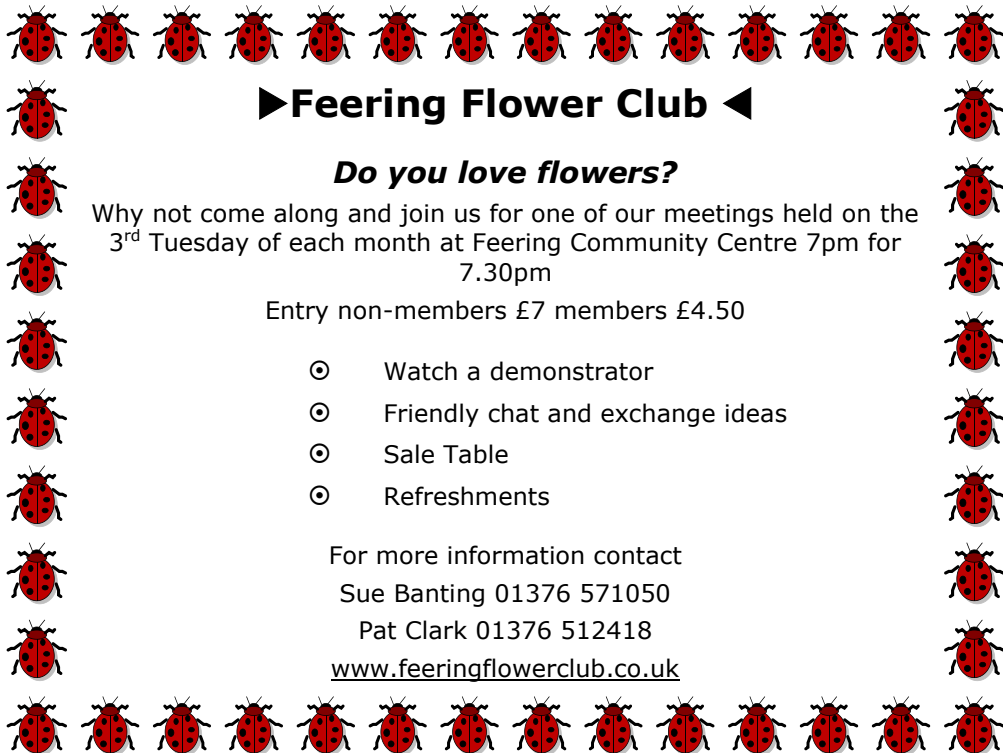
Funerals are arranged and carried out in the Traditional Manner but  
With 'The Gentle Touch'

Pre payment Plans available—Floral Tributes arranges—Woodland Burials  
Bereavement Care—Low Cost Simplicity Funerals - Memorials—Printing  
Catering—DWP Funerals

Part of the Hunnaball Family Group

Members of the National Association of Funeral Directors





## ►Feering Flower Club ◀

### *Do you love flowers?*

Why not come along and join us for one of our meetings held on the 3<sup>rd</sup> Tuesday of each month at Feering Community Centre 7pm for 7.30pm

Entry non-members £7 members £4.50

- ⊙ Watch a demonstrator
- ⊙ Friendly chat and exchange ideas
- ⊙ Sale Table
- ⊙ Refreshments

For more information contact

Sue Banting 01376 571050

Pat Clark 01376 512418

[www.feeringflowerclub.co.uk](http://www.feeringflowerclub.co.uk)

## DANIEL ROBINSON & SONS

Incorporating  
W C BROWN & SONS

**Independent Family Funeral Directors & Monumental Masons**

*A professional, caring, 24 hour service*

Private Chapel of Rest

Fleet of air conditioned limousines

Horse drawn funerals available

Traditional and contemporary funeral services to suit your wishes

Funeral pre-payment plans

Arrangements may be made in the comfort of your own home, if preferred

**Haslers Lane**  
**Great Dunmow**  
Tel: (01371) 874518

**7 Manor Street**  
**Braintree**  
Tel: (01376) 320582

**31 High Street**  
**Halstead**  
Tel: (01787) 475533

[www.drobinson.co.uk](http://www.drobinson.co.uk)

## New Year – routine chores?

Happy New Year to you all! The start of the new year is a good time look at your safety and security and check that everything is as it should be both inside the house, outside and at work. Below are just a few things to consider but I am sure you can think of many more:

- This time of year is a good time prune many varieties of plants, trees and shrubs so have a look at them; ensure that they do not provide a climbing aid into your property or prevent that all important clear view into your frontage that may deter crime. Be mindful though; those brambles, other spiky plants and stinging nettles on your boundary are nature's own deterrent to intruders, any cuttings can be used to fill gaps in a hedge line.
- Consider supplementing your boundary security with some nice spiky plants, they look and smell nice but may also be a deterrent to intruders. Suitable advice can be sought from The Royal Horticultural Society or your local garden centre.
- Fences and gates, are they still intact and well maintained, do the gates lock securely.
- Outside lighting, are they all working okay and are they clean?
- Sheds and outbuilding are they still intact and well maintained, lubricate the locks exposed to the weather.
- Smoke detectors; are they working okay and in date and where appropriate do the batteries need replacing, remember mains operated ones may have a battery back- up that may need replacing regularly.
- CCTV systems: like with your lighting ensure that they are kept clean and maintained. Smart doorbells or other that may use a solar charger, at this time of year they may not be getting much of a charge so consider topping up the battery with a charger where appropriate.
- Property marking; over Christmas you may have

received some new tools, electrical or computing items consider using an appropriate property marking product.

- 21/12/22 was the shortest day so we still have a few more 'darker nights', make your home look like you are in even when you are out by having lights on timers in the house and perhaps a TV simulator.
- Lastly in my list, don't leave your car unattended on the drive with the engine running whilst you de-ice/demist it, it only takes a minute to steal it and it may affect an insurance claim.

For further crime prevention advice see <https://www.essex.police.uk/cp/crime-prevention/> or <https://www.securedbydesign.com/guidance/crime-prevention-advice>

\*\*\*\*\*

## **Christmas 2022 Carols on the Green (and Village Social)**

Organised by the Rivenhall Millennium Committee, this year's carols on the green took place on the evening of Tuesday 20<sup>th</sup> December. Over 150 people came along and heartily sang - all with the backdrop of this year's beautiful illuminated Christmas tree (provided by the committee - £750 this year ... ouch!)

After a welcome and introduction by John Macrae, our Team Rector Rev Dr Jonathan Pritchard led us through the carols, starting with a rousing Come All Ye Faithful, to the wonderful accompaniment of the Chelmsford Silver Band. Over 160 people came along including the village's regular supporter - our very own Essex County Councillor Ross Playle.

All the children gathered round Jonathan for a lovely traditional rendition of Away in a Manger. We were very fortunate; one week earlier it was 20 degrees colder!

It was then back to the beautifully decorated village hall where the 12-man band played lively seasonal tunes from the stage. This annual free get-together is also funded by the Rivenhall Millennium Committee.

Wilson Kerr oversaw the mulled wine and fruit juices, Lilian Pearce minded the mince pies and sausage rolls, and a venerable army of volunteers including Jenny Turner and Carole McCarthy sold and processed the raffle tickets.

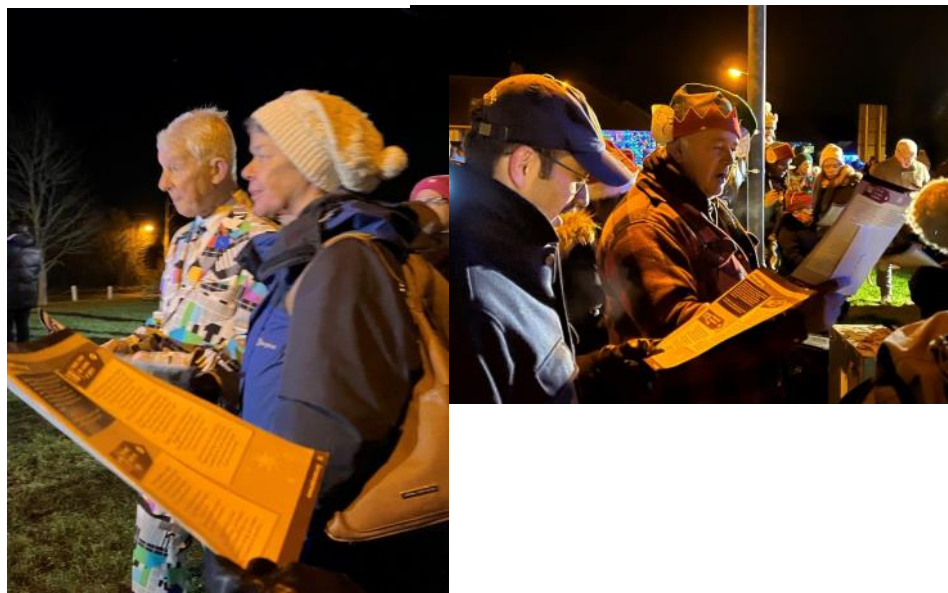
Towards the end of the evening the magnificent raffle was drawn by Carole McCarthy and John Macrae.

(He might not know it, but Robert Pearce's striking Elf Hat had many secret admirers during the evening!)

It is great to see so many in our community come together and clearly enjoy each-other's company. The Rivenhall Millennium Committee sincerely hope that everyone had a joyous Christmas and that 2023 is a truly happy year for all.







\*\*\*\*\*

## **Turning the pages of History**

### **Research by Tracy Scott**

We continue looking at the Rectors of Rivenhall from the articles written by Rev. David Nash in 1975/6. This month we cover the 17<sup>th</sup> Century only.

Rectors of Rivenhall Part 10

By Rev. David Nash

17<sup>th</sup> Century 1: The church building at this time from the outside it looks today; it had a squat tower which together with the main walls was made of flint rubble – for all to see! No cement stucco in those days! The roof was of red tile and sloped more steeply than it does today. The two doors in the nave and the priest door in the chancel were where they are today but the porch was an older one; the window (Early English) were fewer: one of these had been blocked up for the construction of the Wiseman tomb. The church stood in a setting devoid of the present cedar trees – Indian cedars were only introduced into England as late as 1831 and although

some cedars of Lebanon were being brought in the 17<sup>th</sup> century, ours are not quite so old. We may picture the churchyard, however, skirted by elms but curiously empty of any tombstones; only the Medieval Churchyard Cross (now lost) stood as a memorial to the departed. None of the present yew trees were there save, possibly, the remaining old yew in the centre of the South side of the graveyard. In the North corner of the site, by the road, was the parish clerk's cottage and instead of a wall frontage there was a hedge.

The Interior was very different; the people sat in high box pews; the floor was made up of 5" tiles – very cold in the winter – and the dominating item of furniture in the first half of the century was the '3 Decker Pulpit'. The beamed roof looked down upon walls which were empty of memorial tablets but painted in red, yellow and black wall decoration (a sample of this is now displayed near the present pulpit) This painting formed a frieze which was surmounted by religious texts in black. The altar, during the first half of the century was probably a collapsible table which often stood long-wise (East to West) at the nave end of the chancel. The old stone altar, however, may have lasted until this century; it was, more probably, victim of Edward VI's legislation, when it would have been broken up and may well be the broken slab at the South West of the church today. The old wooden altar certainly dates from half way through the century (say 1662) but may even be Elizabethan. There was some stained glass. No doubt the stone tomb lids were prominently visible, but not where they are now.

The floor level in the chancel was the same level as the nave and this meant that the Wiseman tomb was at a lower level than it is now. Similarly, the Communion rails which date from this time, were then at least a foot lower.

Worship: The time-honoured hour for Sunday worship was 9am. This could be read on sunny days upon the scratch-

dial, still to be seen on the stone-work of the South-East Nave window; a bell was rung at this time also and the custom of this nine a.m. bell hung on in Rivenhall until the 19<sup>th</sup> century...even though the service had moved to a late time! The later service would have been in the afternoon during the winter months; evenings in the summer. During the 17<sup>th</sup> century, the fortunes of the Holy Communion service dwindled to low ebb. This service which was one the service Christ expected from his true followers, became a quarterly affaire in places like Rivenhall.

Those who cared for its proper celebration were cross that in some churches, the pulpit blocked or eclipsed the altar; they were sad that the clergy came round to the people in their box-pews with the holy sacrament instead of people being all together at an altar for this most sacred moment; it was like lots of little Communion services, - 'You in your small corner, and I in mine' rather than the offering of a united community! How the parishioners must have wondered what it was like when Medieval Rivenhall had seen a social unit, bringing their weekday fellowship with them Sunday by Sunday as they participated in the Mass!

The Rivenhall community was such a straggly one that to worship separately was to perpetuate division in the face of prayer of Christ that His followers should be ONE. So, during this time the people reverted to moving up into the chancel for Communion; they would do this half way through the service at first, when the altar was 'long-wise' on, and they would all kneel round it. Later, the altar was restored to the East end, and the Communion rails, - put in originally not for people to lean on, but to screen of the altar, - came into their own as a natural focus for the receiving of the sacrament. Nevertheless, preaching had become elevated to a position it had never known before; sermons lasting two whole hours were common in places like St. Paul's, London - then the mother and cathedral church of Essex.

The Rectory This was the Tudor rectory, only part of which now stands on the Old Rectory site. In a terrier of 1610 it

was stated that besides the parsonage house there were about 100 acres of glebe-land, upon one field of which, called the Grove, there was 'tenement'. This was hardly likely to have been 'The Grove' in Witham. In the Parochial Inquisition of 1650, the Parsonage House, barns, stables and glebe with tenement were said to be worth £62 (p.a.) which added to tithes of £150 per annum gave a total income of £212...worth a lot more in those days. We now have no glebe and no tithes; some of the closes of Forest Road stands upon this old Rivenhall glebe. The infamous Heath Tax returns of 1662 and 1671 show rector Lisle with 7 hearths and Rector Strutt with 8...he had obviously unblocked or added one!

Rivenhall Church Plate A visitation list for the Colchester Archdeaconry of 1685 states that Rivenhall possesses –"A small Chalice and Cover of Silver"- "The old flagon to be changed for two new ones of about three pints a piece" We do not know what became of this plate but by 1720 we had been given a far better set.

Next month we will look at the Rectors of Rivenhall during the 17<sup>th</sup> Century.

\*\*\*\*\*

## **The 2022 Rivenhall Santa Sleigh**

On Thursday 15<sup>th</sup> December, construction of the Rivenhall Millennium Committee's Santa sleigh began in a barn at Rivenhall Hall: many thanks once again to Robert Pearce who provides the space ... and regular warming drinks!

Bob Turner and John Macrae set about their annual tasks in preparation for Santa to glide around the village that Sunday. All was ready ... except the weather ... it was to rain constantly all that day. So all eyes were on the forecasts and Thursday 22<sup>nd</sup> became the best option.

And so it was: at 3:30 pm the musical, illuminated Santa Sleigh complete with Santa, his reindeer, and his village gifts,

left the farm and started its glide around Rivenhall. Bob Turner managed the sleigh with Robert Pearce and Wilson Kerr providing front and rear escorts.

Despite the evening being rather damp, large numbers of people came to their doorways, their gates and their windows, enthusiastically waving to Santa. Santa's Elves worked tirelessly delivering gifts to all homes with a resident of 70 or over (Ho-Ho ... even Santa received one!) In addition, several of the elves distributed sweets to all the children who came to see Santa.

Our last stops in Rivenhall were in Bluebells (Tarecroft Way, Horseshoe Drive, Blancheforte Gardens). Last year you came out in force and you were again extremely welcoming to us all - Thank You.

"The team" had a most welcome break with refreshments very kindly provided by Ian and Pat Payton at Hoo Hall. But Santa needed to get on his way so off they all went to Rivenhall End where again large crowds came turned out to welcome Santa and his sleigh. (At some point in Browns Row, Santa procured a beer ... and it didn't last very long!) In Foxden, Santa and his sleigh unexpectedly, but delightedly arrived during a children's birthday party so he was absolutely thrilled to provide additional sparkle to their evening.

This year's elves were Jenny Turner, Laura Hatley, Ann Kerr, Carole McCarthy and Jackie Allan. Santa was, once again, John Macrae.

The Rivenhall Millennium Committee is so very grateful to everyone who continues to support them, and of course to all of you who came out to see Santa on that very special evening. Several of you kindly gave us donations on the night - very kind. We must also mention The Henry Dixon Trust who made a very significant donation towards the costs of providing Rivenhall with its unique and very special Christmas.



Santa's Sleigh in Rivenhall



# **BURNS SUPPER**

**Saturday 4 February 2023**

**An Evening of Scottish Fare and Entertainment at**

**SILVER END VILLAGE HALL**

**The Broadway, Silver End CM8 3RQ**

**Tickets**

**£29**



**Live music with The Caledonian Reelers**

**and Caller Sue Last**

**Piping interlude**

**7.00pm for 7.15pm**

**Last dance 11.30, Carriages 11.45pm**

**Tickets available from Ann Kerr 01376 515437**

***Please bring your own drinks and glasses***

***In the event of cancellation by either party, there is a non refundable £5.00 deposit***



# BURNS SUPPER 2023

We will be holding the traditional full scale Burns Supper and Ceilidh in Silver End village hall on Saturday 4 February 2023. In line with so much else, we have had to increase the ticket price to £29 per head to cover our costs. It's still good value for a meal (haggis, tatties & neeps, followed by cheese & biscuits). There is live entertainment for Scottish country dancing, and of course a piper or two or three.... We look forward to seeing a full house this year after the limitations of Covid. The hall opens at 7:pm, and proceedings start at 7:15 and finish about 11:30 pm. This is our major fundraiser for the parish and helps to support a lot of good work in the communities of Rivenhall and Silver End. Bring your own drinks and glasses (there is no bar). Tickets as usual from Ann Kerr on 515437, and we look forward to seeing you there.

Jackie Allan

## Friendly Bridge Tournament

**MONDAY 24TH APRIL  
2023**

**HENRY DIXON HALL**

10.30am for prompt 11.00am start

Tickets £ 21.00 per person

Price Includes :

Coffee and biscuits on arrival

2 Course Lunch with Wine

**For Tickets please telephone :**

**Ann or John on:**

**01376 515400 or 07775 722622**

***All proceeds to St Mary and St Francis  
Churches***





COLEMANS COTTAGE FISHERIES

## Lakeview Tearooms

Come and enjoy the view whilst  
having a bite to eat



**Open Thursday to Sunday 9am to 3pm**  
**Breakfast, Lunches**  
**Bar, Snacks**  
**Afternoon Tea**  
**Sunday Roast (01376 516383 to Book)**

For more information go to:

<http://www.colemansfisheries.co.uk/witham/cafe/>

Colemans Cottage Fisheries

Little Braxted Ln, Witham CM8 3EX

FREE PARKING 01376 516383

## Grow, Flourish. Succeed Academy Nursery



Opening September 2022, we are  
pleased to be offering a nursery  
for children ages 2 years and up.

Each session will cost £10 (£20  
for a full day)

Nursery sessions will in term time:

Mornings: 8.45am - 11.45am

Afternoons: 11.45am - 2.45pm

All Day: 8.45am - 2.45pm

If you would be interested in a  
place, please email  
[nurserysil@connectedlearningmat.co.uk](mailto:nurserysil@connectedlearningmat.co.uk)  
with your child's name, date  
of birth and the sessions and days  
you require.

Aerial Photography

Barns

Chimneys

Roof Tops

COST EFFECTIVE, SAFE ACCESS,  
ROOF TOP INSPECTIONS BY  
DRONE WITH NO NEED FOR  
SCAFFOLD, TEMPORARY WORK  
OR STRUCTURES REQUIRED.



NON DISRUPTIVE, FAST AND  
PROFESSIONAL SERVICE, SAME  
DAY REPORTS AND  
RECOMMENDATIONS FOR  
REPAIRS

FULLY CAA AND CIOB  
REGISTERED, QUALIFIED AND  
INSURED SERVICE. CARRIED OUT  
BY EXPERIENCED SURVEYORS.

Call to discuss your requirements;  
Chris: 07817219133  
Jim: 07966403783  
email: [highsightse@gmail.com](mailto:highsightse@gmail.com)

Historic Buildings Monitoring

Building Inspections

Estate Records

## Organisations in Rivenhall

Clerk to Parish Council	Keith Taylor	516975
Email parishclerk@rivenhallparishcouncil.net	meets every first Tuesday	
End to End Nature Care	Simon Taylor	01621 810141
Gardening Club	Carole McCarthy	512781
Meets on 2nd Tuesday at 7.30pm in Village Hall		
Carpet Bowls	Mick Marshall	512836
Meets every Thursday at 7.30pm in Village Hall		
Playing Fields Association	Mick Marshall	01376 512836
Spread Your Wings Dance Acam	Laura Pearson	01376 741317

## Facilities

Hire of Village Hall	email rivenhallvillagehall@gmail.com	
Hire of Henry Dixon Hall	Tracy Scott	571551
Oak Store Rivenhall "Open All Hour" Tel AJ		01376 538838

## Organisations in Silver End

Clerk to Parish Council	Mrs B. M. Temple	618464
Email parishclerk@silverendparishcouncil.gov.uk		
Bowls Club	Paul Mann	07551 006906
Children's Centre	Faye Savage	587960
Neighbourhood Police	Braintree Policing Dial 101	
Congregational Church	Sharon Gray	583913
Friendship Club	Maureen Green	585275
Silver End Gad Abouts	Denise Sullens Smith	07952 992782
Gardening Club	Liz Woor	585586
Guiding Group	Carol Hutchings	07857 663959
Neighbourhood Watch	Judy Hill	07896 975839
Scouting Group	Elaine Hall on +44	7885 489788
St Mary's Church (R.C.)	Vivian Phillips	583598
Tennis Club	Jason Cairns	584581
Workers Educational Assoc.	Brian Gillion	583706
Luncheon Club	Helen Thomson	583255
Doctors Surgery		583387
Silver End Heritage Society	Jackie Nesbitt	07707 084608
Silver End United Football Club	Mark Edgell	584639 Web
Site www.silverendunitedfc.co.uk		
Women's Institute	Brenda Warnes	07931 548193
Community Warden	Jackie Windard	07785 515526
Post Office in Co-op - please note that it closes at Lunchtime 1-2pm		
Closes 1 pm Wednesday and 12.30 pm Saturday		
Library: Tues & Thurs - 2pm to 6pm Saturday 9am to 1pm		



Here **whenever** you need us

Funerals | Memorials | Pre-paid Funeral Plans

**Hunnaball of Witham**

1 Coach House Way, Newland Street, Witham CM8 1YJ

**01376 511592**

[www.hunnaball.co.uk](http://www.hunnaball.co.uk)

**JANET C DAVIES**

Lady Funeral Directors



**Our Ladies  
in Hats**

*"funerals with  
a gentle touch"*

Funerals | Memorials  
Pre-paid Funeral Plans

**Janet C Davies of Kelvedon**

233 High Street, Kelvedon CO5 9JD

**01376 573691**

[www.hunnaball.co.uk](http://www.hunnaball.co.uk)

# DRH LANDSCAPES

Est. 1987

Quality Comes 1<sup>st</sup>

**Garden Landscape and Design – Hard Landscaping – Soft Landscaping  
Grounds Maintenance for Private and Commercial Premises**

- Are you planning to redesign and landscape your garden?
- Does your garden just need a little TLC or a complete makeover?
- Are you looking for assistance with regular garden maintenance or perhaps a one-off visit to get things back in order?
- Is your lawn looking tired? Would you like a new replacement lawn or artificial lawn instead?

We are a family run business with over 30 years of experience working in the ever changing world of landscape management, business regulations and horticulture, with full public and employer liability insurance, as well as being a fully registered waste carrier with the Environmental Agency.



OFFICE: 01376 514142

We welcome...



EMAIL: [info@drhlandscapes.com](mailto:info@drhlandscapes.com)

[www.drhlandscapes.com](http://www.drhlandscapes.com)

Harcourt Centre, 77-83 Maldon Road, Witham, Essex CM8 1HP



Proud members of  
**Checkatrade.com**  
Where reputation matters